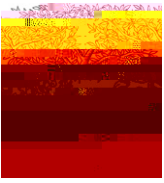


Contents lists available at [SciVerse ScienceDirect](http://www.elsevier.com/locate/biopsycho)

# Biological Psychology

journal homepage: [www.elsevier.com/locate/biopsycho](http://www.elsevier.com/locate/biopsycho)



Center for Brain and Cognitive Sciences,

... ..





Fig. 2. Topographic maps of the ERP waveforms.

3.2. ERP results

ERP waveforms were plotted for each electrode site. The waveforms were plotted for each electrode site. The waveforms were plotted for each electrode site. The waveforms were plotted for each electrode site.



